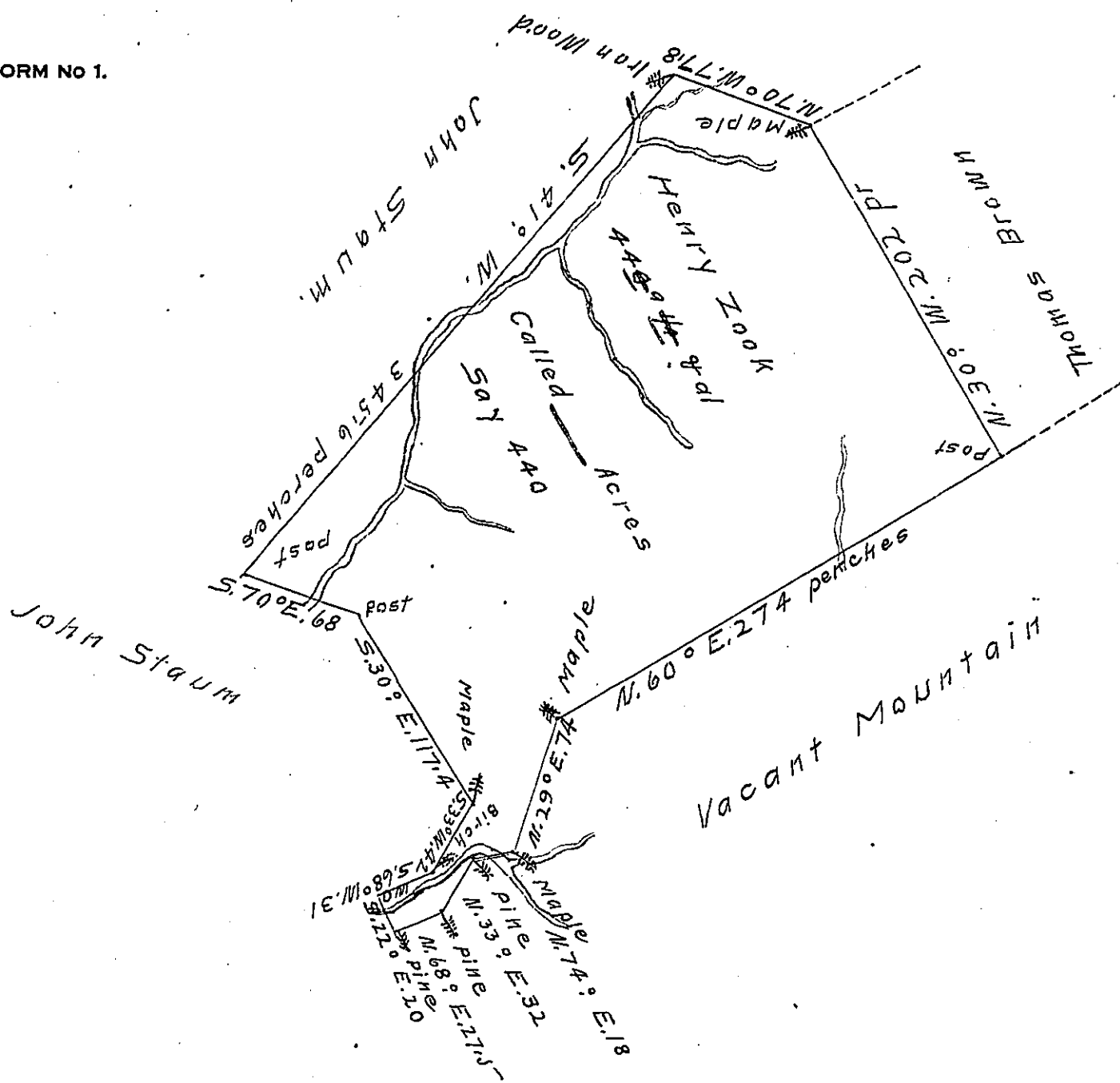


FORM No 1.



Situated on the South Side of Castleman's River between
 Said River and the Head Branch of Laurel Run in the
 Township of Brothers Valley and County of Bedford and surveyed
 the 1st Day of March 1785 in pursuance of a Warrant
 Dated the 10th Day of December 1784.

Alexander McLean Dy

John Lukens Esq.

Surveyor General

IN TESTIMONY that the above is a copy of the original remaining on file in
 the Department of Internal Affairs of Pennsylvania, made
 conformably to an Act of Assembly approved the 16th day of
 February, 1833, I have hereunto set my Hand and caused
 the Seal of said Department to be affixed at Harrisburg,
 this 19th day of August 1907

Henry Howell
 Secretary of Internal Affairs.